

GPA SEABOTS

Blue Floating Technology for the knowledge and preservation of the aquatic environment.



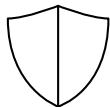
SB100
Unmanned Surface Vehicle

SB 100 is a Compact and versatile USV for all types of tasks in sheltered waters.



Less operational cost

Operable with one person, it is not necessary to bring surveyors on board. Easy to transport, which significantly improves work efficiency and with little maintenance. Large savings in labor and fuel costs. They allow autonomous and continuous inspection



No human risk

By not having a crew they can operate in situations and environments of greater risk.



Minimal environmental impact

Without fossil fuels, oils or other elements harmful to the environment.



Real-time information and greater data accuracy.

Obtaining data in real time at the control station. It facilitates immediacy in decision making. Navigation according to the planned route with great precision to generate accurate data reports.

Features

GNSS RTK

Multiband System

Long range telemetry

with dual frequency System and 4G

Blackbox unit

with Windows 10 and autopilot System

True heading

two sensors

Front camera

with real-time fullHD on command unit

Double Thruster

high maneuverability

Dual battery set.

Fast replacement

Collision avoidance

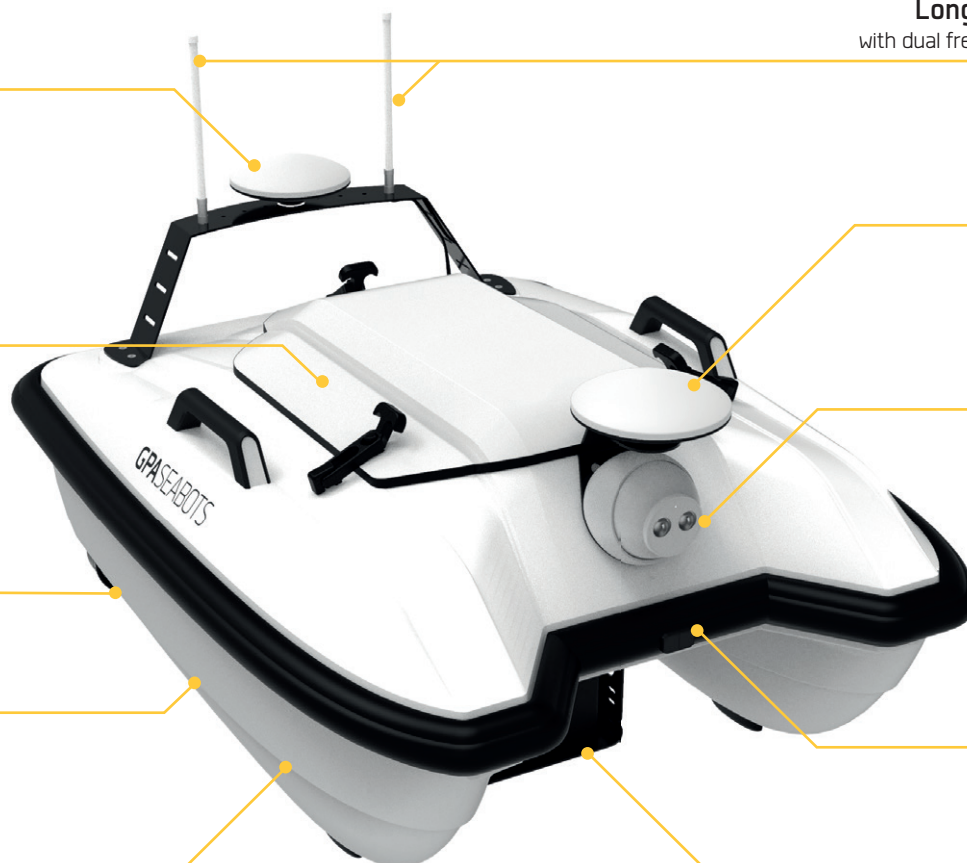
programmable sensor

Heavy duty composites

unsinkable hull

Payload Bay

with USB & RS232 connection



Specifications



SB100SURVEYOR

**Multipurpose
and versatile**



SB100MULTIPRO

**Smallest
multibeam USV**



SB100CLEANER

**Harbour water
cleaning system**

| | | | |
|-----------------------------------|----------------------|----------------------|----------------------|
| Main dimensions | 100 cm x 72cm x 47cm | 100 cm x 72cm x 47cm | 100 cm x 72cm x 40cm |
| Draft | 14 cm | 18 cm | 8 cm |
| Weight (without batteries) | 21 kg | 34 kg | 18 kg |
| Material | Composite | Composite | Composite |
| Maximum speed | 1,5 m/s - 3 Kn | 1,5 m/s - 3 Kn | 1,5 m/s - 3 Kn |
| Working speed | 1 m/s - 2 Kn | 1 m/s - 2 Kn | 1 m/s - 2 Kn |
| Payload (maximum load) | 12 kg | - | - |
| Batteries | 44 Ah @ 12V | 44 Ah @ 12V | 44 Ah @ 12V |
| Obstacle avoidance | front up to 12m. | front up to 12m. | front up to 12m. |
| Telemetry and HD video | up to 1,5 Km. | up to 1,5 Km. | up to 1,5 Km. |
| Engines | Doble thuster 9 Kgf. | Doble thuster 9 Kgf. | Doble thuster 9 Kgf. |
| Autonomy | up to 3 hours | up to 2,5 hours | up to 4 hours |
| Battery charger | less than 2 hours | less than 2 hours | less than 2 hours |

Control Station

**Long Range
Telemetry
and HD video**

Easy control
fully customizable

**Programmable
Autopilot**
FHD touch screen



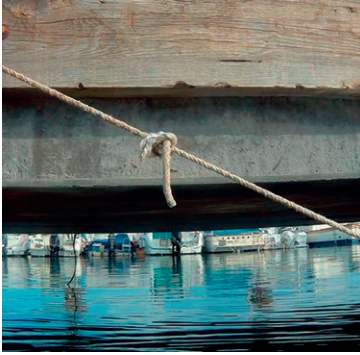
Rugged case
Easy and safe transport

Tablet PC Windows 10
FHD touch display
USV mirroring

Connections:
GNSS antenna
USV remote antenna
USV 3.0
USB charge
220 V AC

Internal Battery
for nextende life

Payload



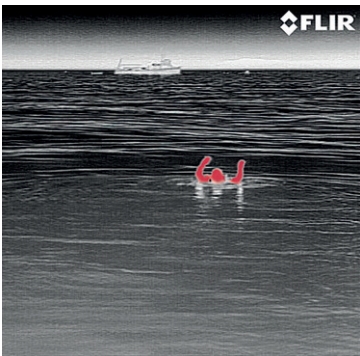
Frontal camera

First person camera (FPV) to operate in confined spaces, including direct invisibility. This image is displayed in real time on the control panel and can be registered for subsequent inspections.



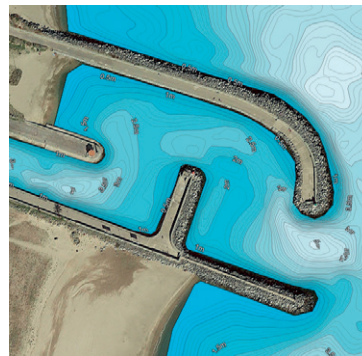
Underwater camera

In order to carry out shallow visual inspections, an HD underwater camera is incorporated, with image enhancement technology that makes it possible to clarify and see better in water in real time.



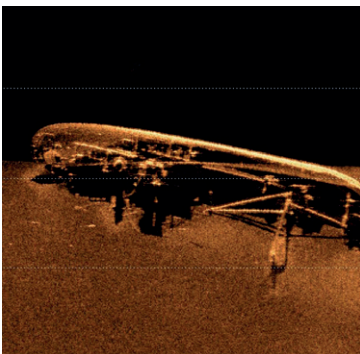
Thermal camera

Ideal for environments with very low visibility, even in the absence of light. It allows us to identify objects according to their temperature, such as moving boats or people.



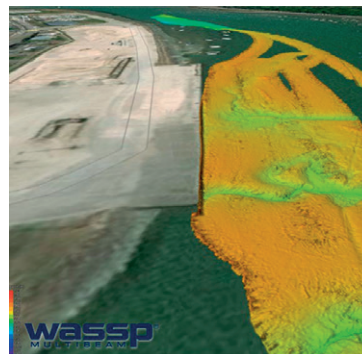
Singlebeam echosounder

The singlebeam echosounder gives us depth information as well as the water and bottom column. Easy to use and setup is ideal for simple bathymetric surveys



Sidescan Sonar

Integrated into the hull itself, it generates spectacular geo-referenced images of the seabed that allow us to understand the texture and objects found in it.



Multibeam echosounder

The multibeam system allows bathymetric surveys with much more information in less time. Our SB100 Multipro is the most compact USV system in the world to integrate this technology.



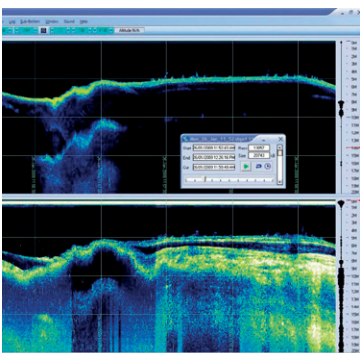
Multiparameter sounder

It allows obtaining more than 20 parameters of water quality and composition in georeferenced form and in real time.



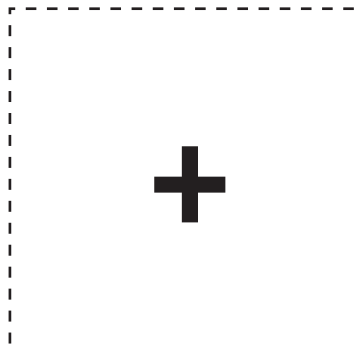
ADCP

The current profiler is an ideal instrument for hydrography that allows us to measure the speed of water at different depths of the column.



Underground Profiler

It is an echosounder that emits at a very low frequency, which is capable of penetrating the seabed and obtaining a clear image of the seabed.



Optional Payload

SB100 can equip all kinds of instrumentation. It is a 100% customizable platform.

Task automation.
Increased reliability of data.



High versatility
in payload



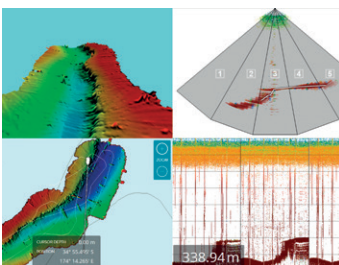
Easy transport & deployment.
One single operator



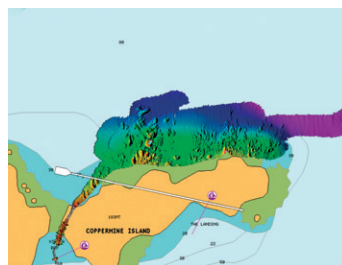
Access to
confined & high-risk
areas,



Applications



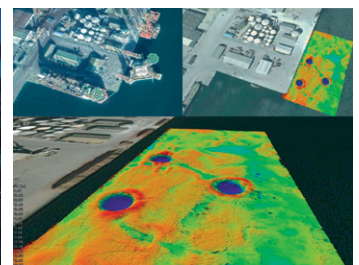
Environmental studies



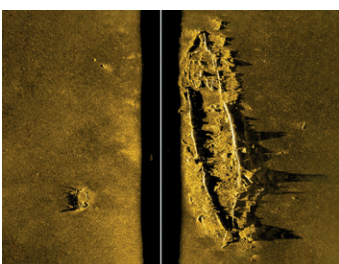
Cartography & bathymetric surveys



Aquaculture & fishing



Engineering & construction



Archeology



Search & rescue (SAR)



Inspection



Water surface cleaning

www.gpaseabots.com

stay tuned
#gpaseabots
#seabots

+34 931 256 536
info@gpaseabots.com
C/ Caracas, 13-15, nau 6. 08030 Barcelona